



LEADING THE DESIGN AND MANUFACTURE OF ADVANCED METERING PRODUCTS
AND INNOVATIVE ENERGY MANAGEMENT SOLUTIONS

Advanced Metering Infrastructure

- ▶ Accurate & reliable metering
- ▶ Open standards architecture
- ▶ Reduced operational costs
- ▶ Designed to individual requirements

ZPA builds world class Advanced Metering Infrastructure (AMI) solutions that reduce operational costs, improve customer service and optimize load management for electricity, gas and water utilities.

ZPA's open standards approach means your investment will be protected and your risks minimized against systems that rely on proprietary technologies.

Accurate & Reliable Metering

ZPA has built on 50 years of design and manufacturing excellence to bring our smart meter to the residential mass market. We recognise that each utility has its own unique requirements. That is why our smart meter is flexible, built on open standards and modular in design to accommodate various communication technologies. Accurate and reliable metering is the basis of our AMI solution.



- Scheduled / On demand meter reading
- Tamper and theft detection
- Outage detection / Energy quality monitoring
- Easy field installation
- Scheduled energy curtailment
- Remote disconnection / reconnection
- Remote device configuration and firmware update
- Access to customer data via an In-House Display

Complete Communication Interoperability

Reliability and cost are key components of our proven communication solutions that allow utilities to offer AMI features such as remote disconnection, enable load control planning, actual demand response, monitor outages and supply quality.

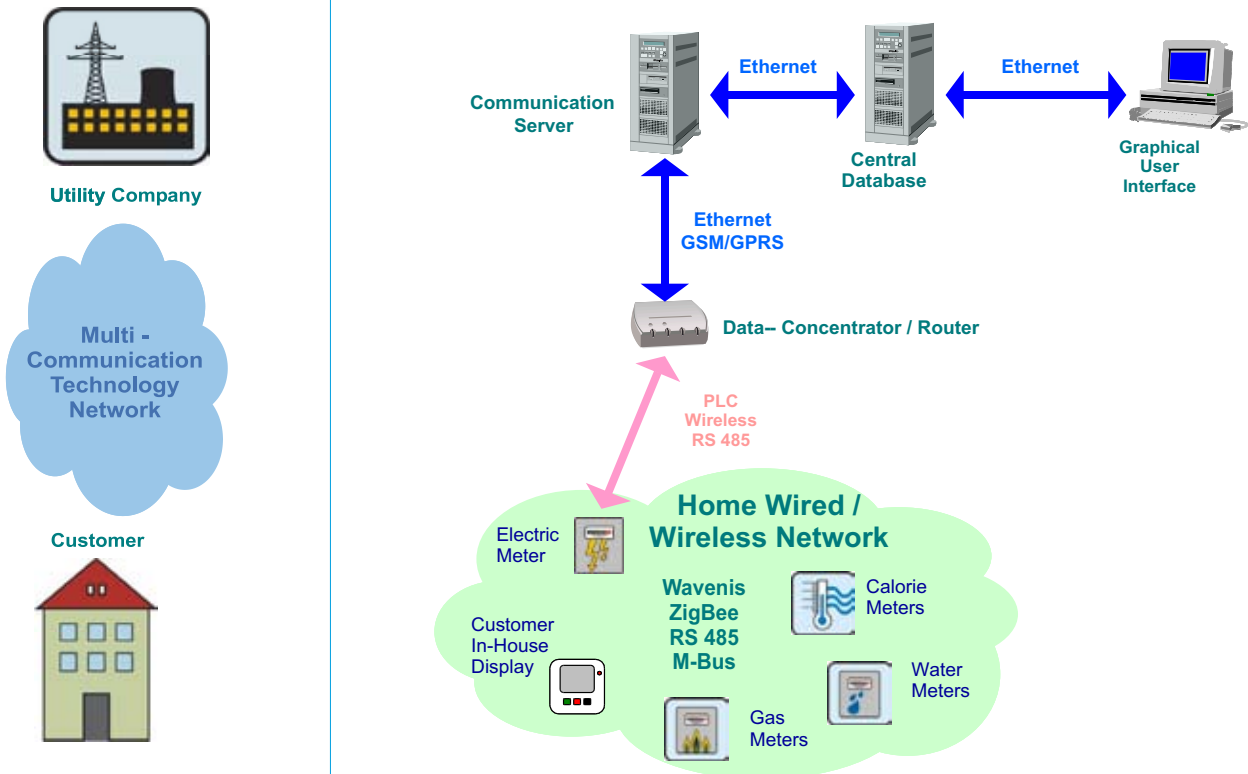
Remaining independent of any particular network communication technology, your mission critical information is transmitted across public and private networks, including both wired and wireless networks.

- Two-way communication with meters of various manufacturers
- Open standards architecture
- Mass market demand-response capability
- Remote load-limiting disconnect / reconnect switch

Manage Large Volumes of Meter Data

Our data management software supports the loading, validation, editing and estimation of critical meter data. Based on open standards, it is designed to integrate seamlessly with utility application infrastructures, helping you manage increasing volumes of data.

- Improved customer service
- Reduced operational costs
- Improved data quality
- Analysis and reporting tools



► **ZPA Smart Energy a.s.**
Komenskeho 821, 541 01 Trutnov, Czech Republic
Phone: +420 499 907 111 / Fax: +420 499 907 497
E-mail: sales@zpa.cz / www.zpa.cz